

AVAILABLE FOR LEASE

5,000 (+/-) SF Office Space
*(*Restricted for non-profit organization use)*
Westend Community Center
S. Main St, Vardry St, and Green Avenue
Greenville, SC 29601



- ◆ Downtown Greenville, Westend
- ◆ Former Charter School & Church School
- ◆ Internet service available
- ◆ Individual offices with large open area
- ◆ Ample onsite, free parking
- ◆ *Restricted for non-profit organization use

Lease Rate: \$5,000 per Month Gross
Utilities, CAM, Janitorial service provided

For additional information

Contact: **Mike Hall, BIC**
E-mail: mike@realcap.com

NOTE: Any space plan, dimensions, or any reference to size has been provided to us by the owner of the property or other sources we deem reliable. We have no reason to doubt its accuracy but we do not guarantee it. All information should be verified before consummating any transaction.

No warranty or representation, expressed or implied, is made as to the accuracy of the information contained herein or provided by RealCap, Inc., and its Agents. The same is submitted subject to errors, omissions, change of price, rental, sale, or other conditions, withdrawal without notice, and to any special listing conditions imposed by our principals. The Owner expressly reserves the right, at its sole discretion, to reject any and all proposals or expressions of interest in the property and to terminate discussions with any party at anytime with or without notice.

08/10 (code 3)

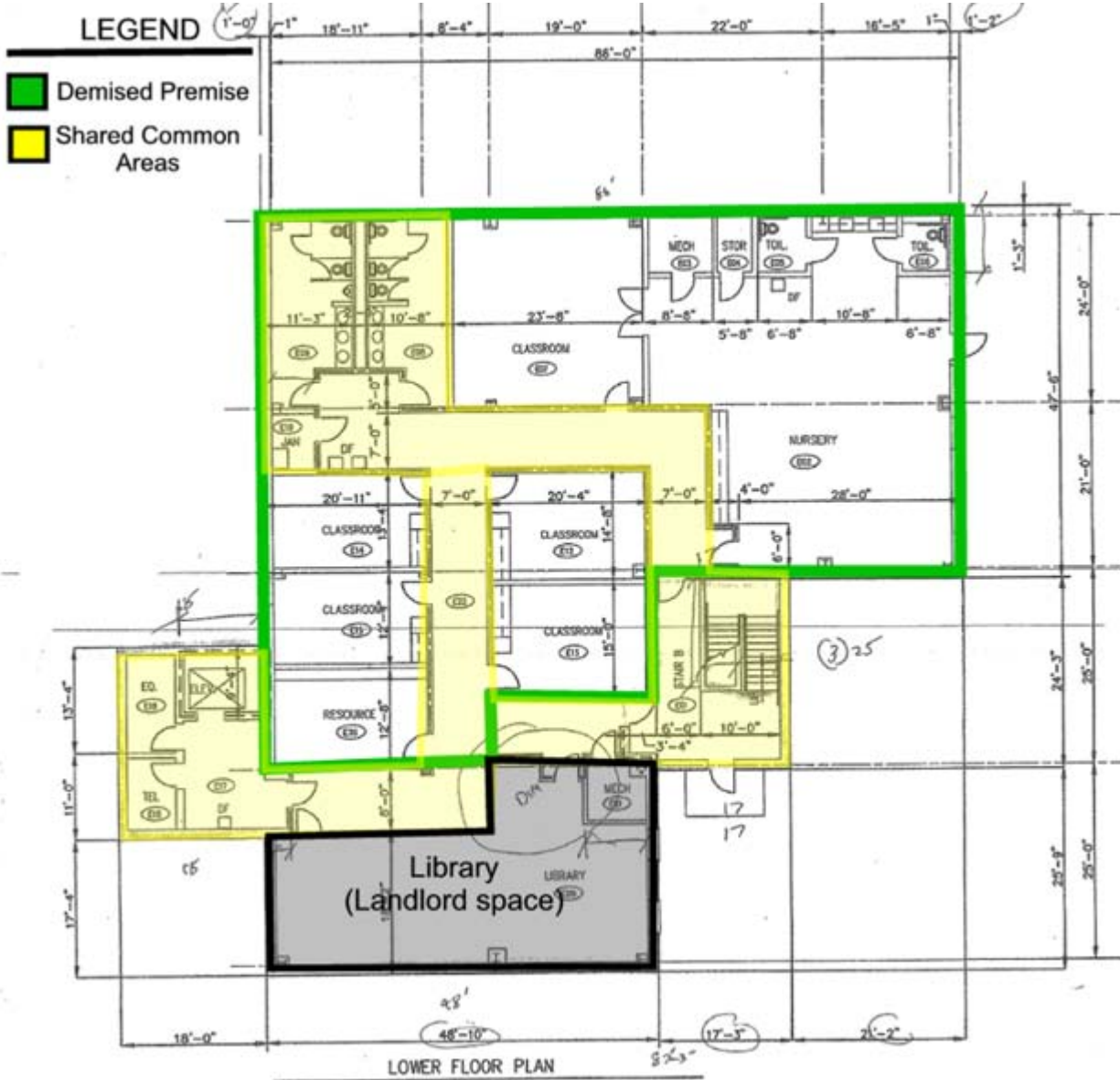
RealCap.com
Commercial Real Estate Services

P.O. Box 9135
GREENVILLE, SC 29604

WWW.REALCAP.COM

(864) 271-0898

Westend Community Center Office Space Plan



NOTE: Any space plan, dimensions, or any reference to size has been provided to us by the owner of the property or other sources we deem reliable. We have no reason to doubt its accuracy but we do not guarantee it. All information should be verified before consummating any transaction.

No warranty or representation, expressed or implied, is made as to the accuracy of the information contained herein or provided by RealCap, Inc., and its Agents. The same is submitted subject to errors, omissions, change of price, rental, sale, or other conditions, withdrawal without notice, and to any special listing conditions imposed by our principals. The Owner expressly reserves the right, at its sole discretion, to reject any and all proposals or expressions of interest in the property and to terminate discussions with any party at anytime with or without notice.

08/10 (code 3)

RealCap.com

Commercial Real Estate Services

P.O. Box 9135
GREENVILLE, SC 29604

WWW.REALCAP.COM

(864) 271-0898